



CHATTERTON | REES



37 Glenrosa Street
, London, SW6 2QY

£765,000



37 Glenrosa Street



Description

A Stunning 2 bedroom garden flat in the heart of Sands End. The property is part of a brand newly developed period building comprised of two properties.

This one, in particular, has two double bedrooms, one bathroom, and an open plan living and kitchen to the rear of the building that opens up on to a private garden accessed via floor to ceiling bi fold windows/ doors which makes the living space very bright throughout the day.

The property has been finished to a very high standard throughout from the flooring, bathroom, kitchen fittings and appliances with nothing missed inside or out.

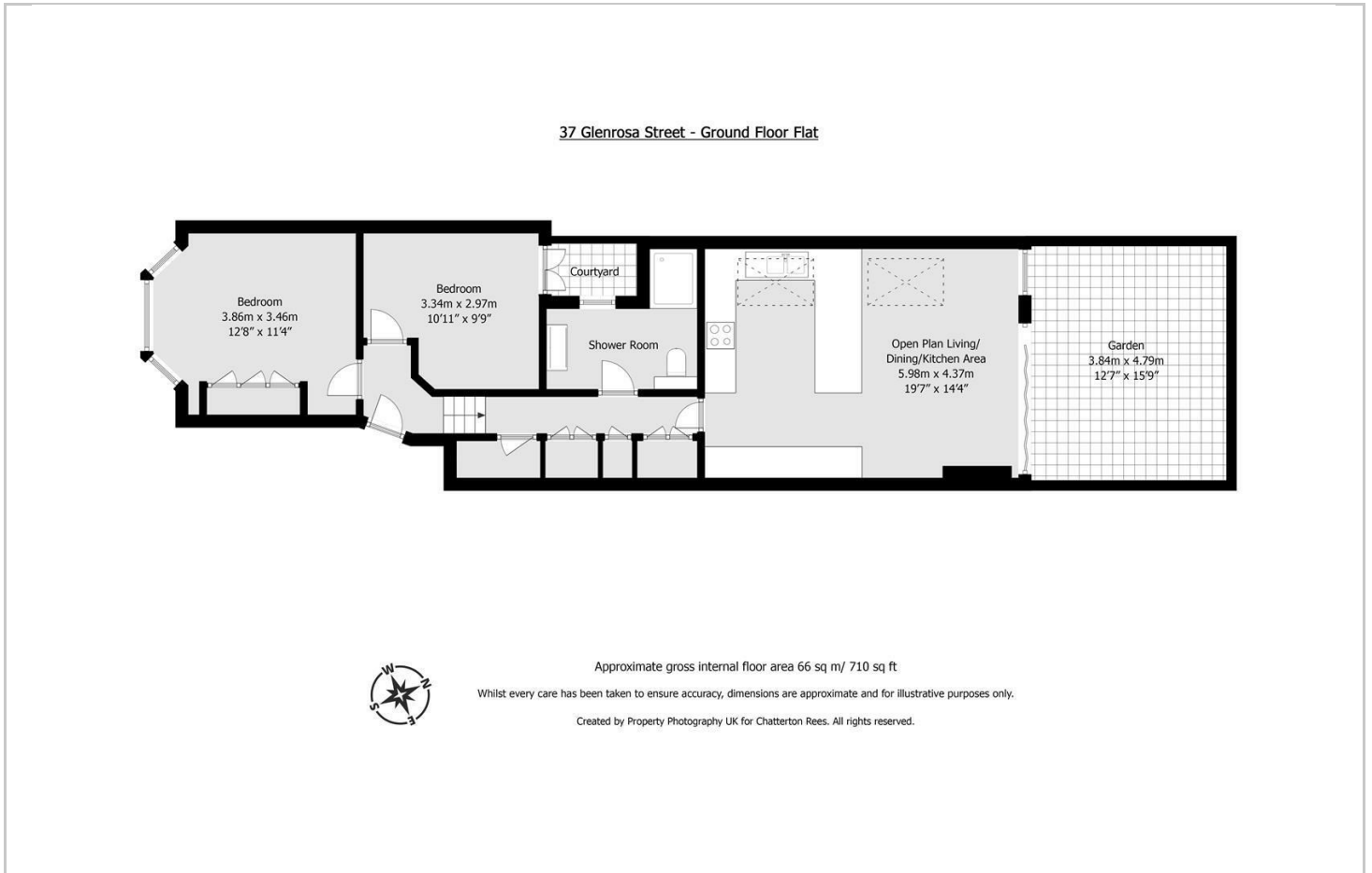
Located only moments from the station, The river Thames and a short distance to Fulham Broadway so is very well placed for local shops, supermarkets and travel.

- Two Bedrooms
- Private Garden
- Brand New Throughout
- One Bathroom
- Bay Fronted
- Long Lease

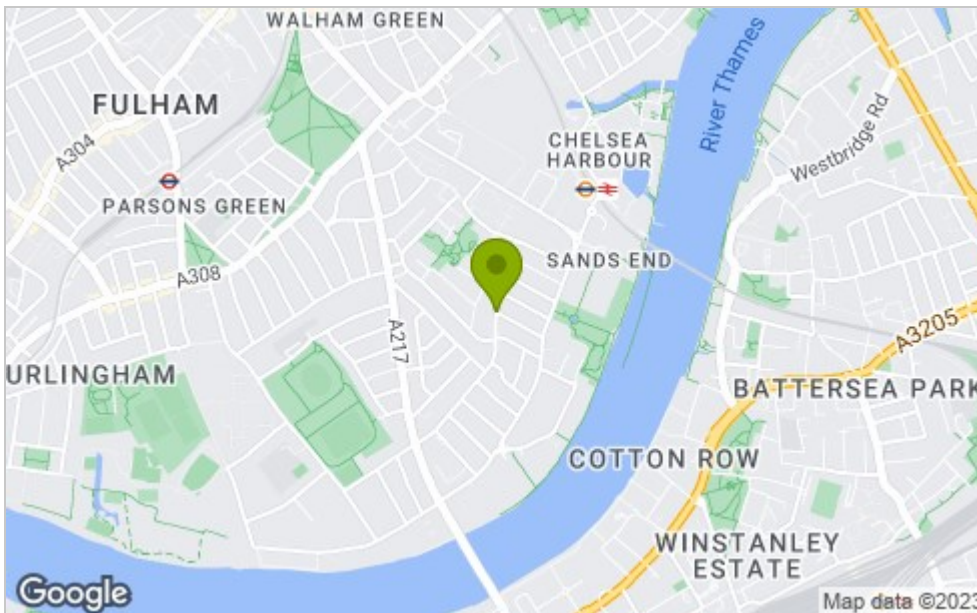




Floor Plan



Area Map



Viewing

Please contact our Chatterton Rees Office on 020 3780 0580 if you wish to arrange a viewing appointment for this property or require further information.

These particulars, whilst believed to be accurate are set out as a general outline only for guidance and do not constitute any part of an offer or contract. Intending purchasers should not rely on them as statements of representation of fact, but must satisfy themselves by inspection or otherwise as to their accuracy. No person in this firm's employment has the authority to make or give any representation or warranty in respect of the property.

Energy Efficiency Graph

Energy Efficiency Rating		Current	Potential
Very energy efficient - lower running costs			
(92 plus) A			
(81-91) B			
(69-80) C			
(55-68) D			
(39-54) E			
(21-38) F			
(1-20) G			
Not energy efficient - higher running costs			
England & Wales		EU Directive 2002/91/EC	
Environmental Impact (CO ₂) Rating		Current	Potential
Very environmentally friendly - lower CO ₂ emissions			
(92 plus) A			
(81-91) B			
(69-80) C			
(55-68) D			
(39-54) E			
(21-38) F			
(1-20) G			
Not environmentally friendly - higher CO ₂ emissions			
England & Wales		EU Directive 2002/91/EC	